

CONFIGURING WINDOWS XP TO OBTAIN NETWORK SETTINGS VIA DHCP

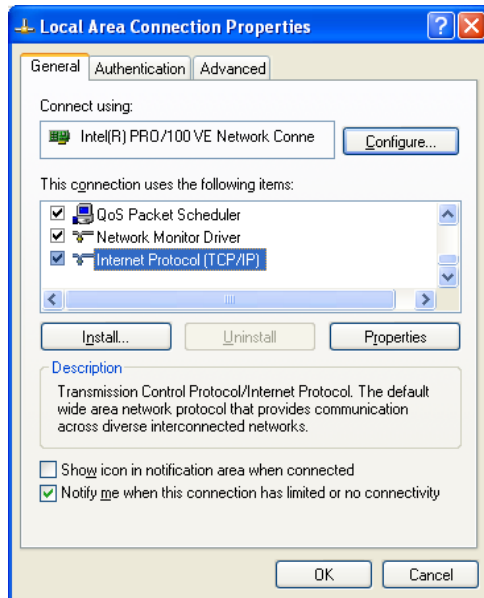
Click the Start button and select Connect to
Select Show all connections

LAN or High-Speed Internet



Local Area Connection
Connected, Firewallled
Intel(R) PRO/100 VE Network ...

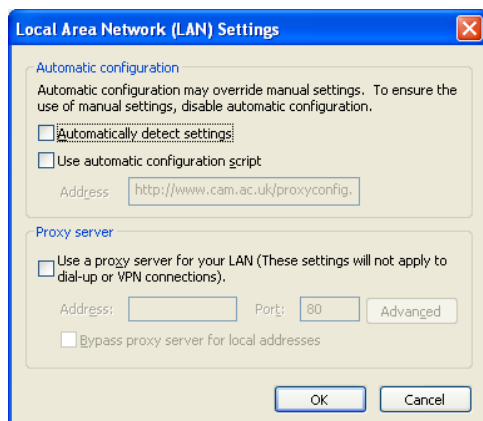
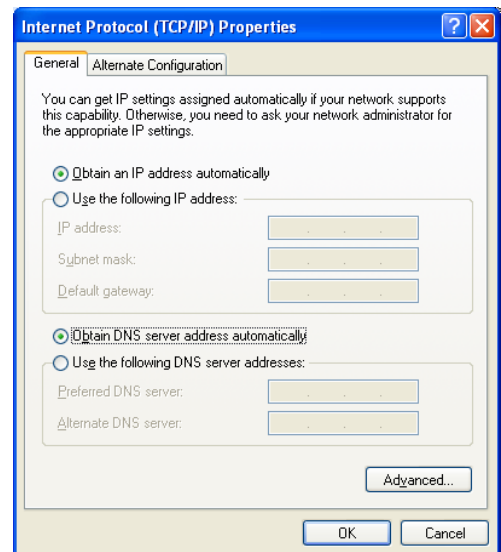
Right click the Local Area Connection icon and select Properties.



In the 'This connection uses the following items' box, scroll down to Internet Protocol (TCP/IP) and click the Properties button.

Make a note of any settings so you can reconnect to your network when you leave Clare.

Select the 'Obtain an IP address automatically' and 'Obtain DNS server address automatically'. Click OK all the way out then close the Network Connections window.



Clear any proxy settings you may have. In Internet Explorer, these are found in the Tools menu, Internet Options.

Click the Connections tab then the LAN Settings button. Untick all boxes and click OK all the way out.

If you require any assistance with your network connections, please contact the IT Department in O3 Memorial Court.