

CONFIGURING WINDOWS VISTA TO OBTAIN NETWORK SETTINGS VIA DHCP

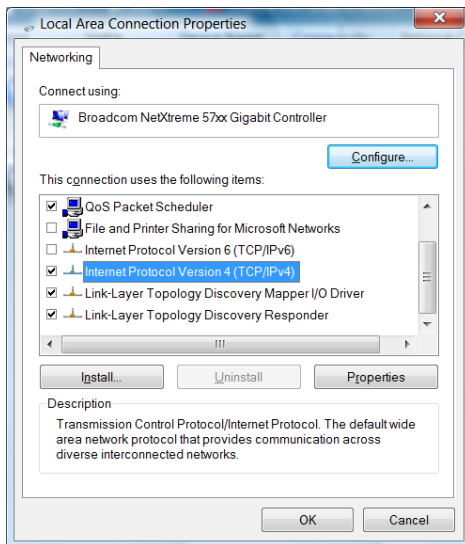
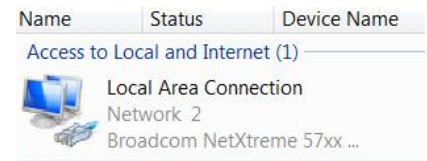


Click on the Start button and select Control Panel
Click on the Networking & Sharing Centre icon



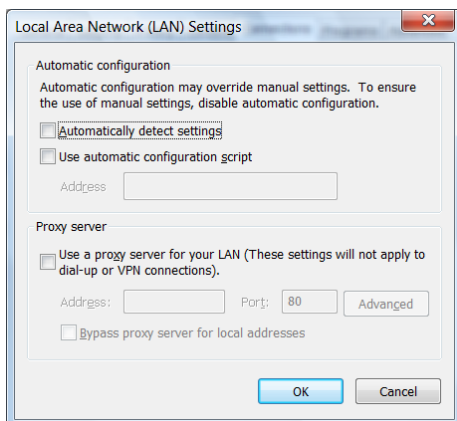
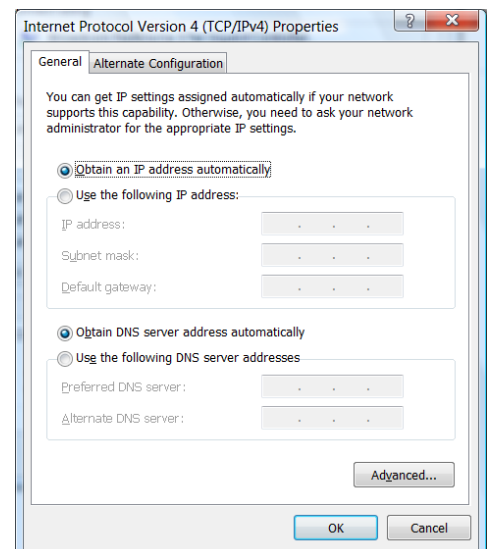
Select Manage Network connections from the options in the left-hand Tasks menu.

Right click on your Local Area Network icon and select Properties.



Select TCP/IPv4 and click on Properties.

Configure your IP address and DNS by selecting 'Obtain an IP address automatically' and 'Obtain DNS server address automatically'. Click OK all the way then close the Network and Sharing Centre window.



Clear any proxy settings you may have. In Internet Explorer, these are found in the Tools menu, Internet Options.

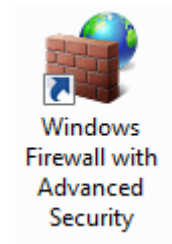
Click the Connections tab then the LAN Settings button. Untick all boxes and click OK all the way out.

Continues on next page....

CONFIGURING WINDOWS VISTA TO RESPOND TO A NETWORK PING

It is a requirement of the University that your PC responds to a communications test known as a "Ping". By default, Vista has this function disabled.

To enable ping, start by going to Control Panel and clicking on Administrative Tools.



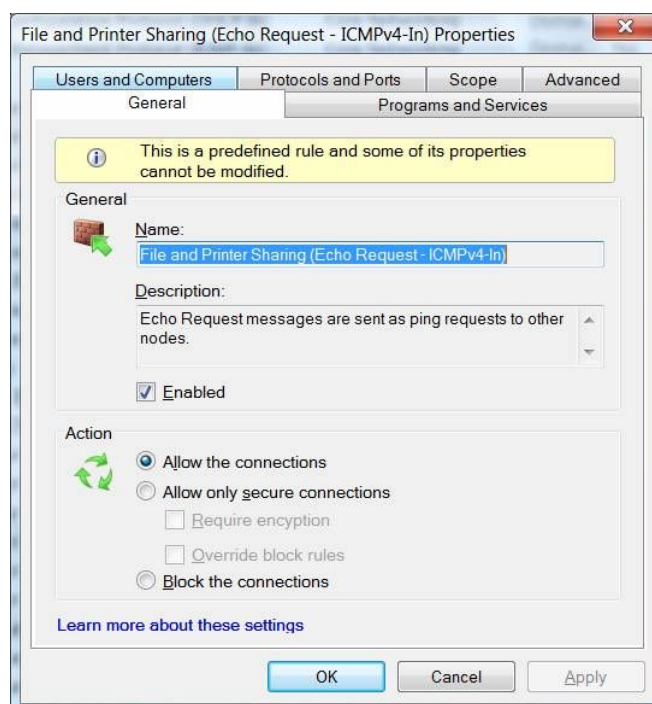
Next, open "Windows Firewall with Advanced Security"

Click on Inbound Rules on the left hand side and a large list of rules will be displayed.

Scroll down to the File & Print Sharing section and look for:

Echo Request – ICMPv4 – In

Double-click on this rule and enable it in the dialogue box that appears (see below).



Once this has been done the rule should appear semi-greyed out in the list but with a green tick on the left hand side.

You can now close Windows Firewall to complete the reconfiguration.

If you require any assistance with your network connections, please contact the IT Department in O3 Memorial Court.